



MONTHLY MEMBERSHIP PROGRESS REPORT

District N 3

Results as of: 11/30/2017

GMT: CHRIS LEWIS

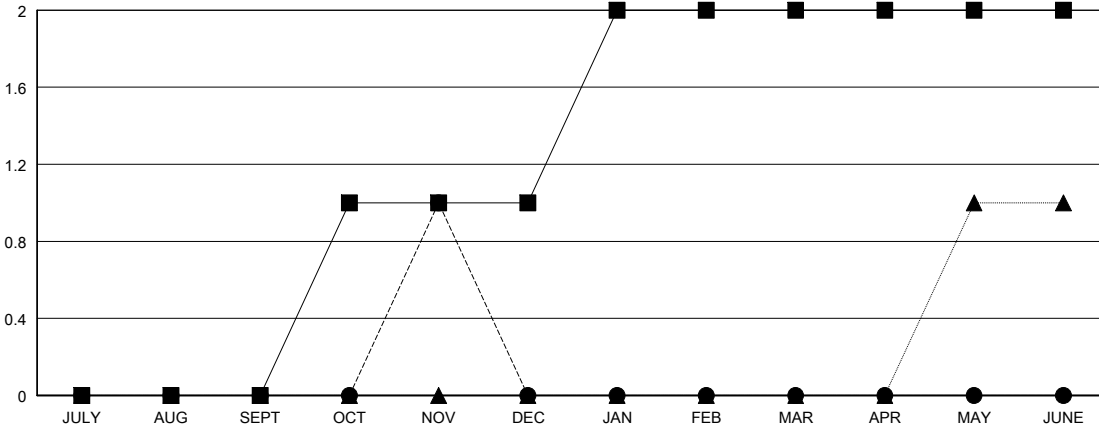
LOCATION NEWFOUNDLAND-LABRADOR

GMT CA

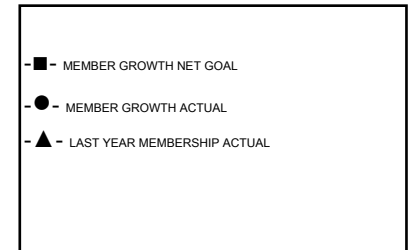
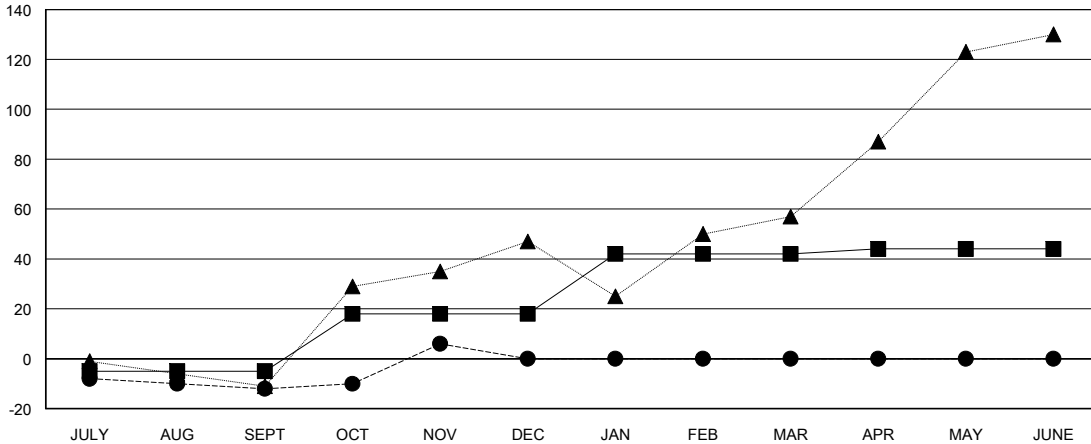
Clubs			
RESULTS FOR 2017-2018			
QUARTER	NEW CLUB GOAL	NEW CLUBS	DROPPED CLUBS
JULY/AUG/SEPT	0	0	0
OCT/NOV/DEC	1	1	0
JAN/FEB/MAR	1	0	0
APR/MAY/JUNE	0	0	0

Members			
RESULTS FOR 2017-2018			
QUARTER	MEMBER GROWTH NET GOAL	MEMBER GROWTH ACTUAL	DROPPED MEMBERS ACTUAL (including transfers)
JULY/AUG/SEPT	-5	4	15
OCT/NOV/DEC	23	46	27
JAN/FEB/MAR	24	0	0
APR/MAY/JUNE	2	0	0

GOALS AND ACTUAL NEW CLUBS CUMULATIVE



GOALS AND ACTUAL MEMBERS CUMULATIVE



DROPPED CLUBS: 0	16 CLUBS OF 40 ADDED 1 OR MORE NEW MEMBERS	<u>GENDER DISTRIBUTION</u> MALE 655 (64.15%) FEMALE 366 (35.85%) Women Percentage Fiscal Year Goal: 32%
<u>DROPPED MEMBERS</u> DECEASED 3 CLUB CANCELLED 0 OTHER 39 TOTAL 42	CLICK HERE FOR CUMULATIVE MEMBERSHIP DATA	TOTAL FAMILY UNIT MEMBERS 198 FAMILY MEMBERS PAYING HALF DUES 100